



Dolby® DP600 DVD Drive Replacement Guide

Issue 1

Part Number 9110450



Dolby Laboratories, Inc.

Corporate Headquarters

Dolby Laboratories, Inc.
100 Potrero Avenue
San Francisco, CA 94103-4813 USA
Telephone 415-558-0200
Fax 415-863-1373
www.dolby.com

European Headquarters

Dolby Laboratories, Inc.
Wootton Bassett
Wiltshire SN4 8QJ England
Telephone 44-1793-842100
Fax 44-1793-842101

DISCLAIMER OF WARRANTIES:

EQUIPMENT MANUFACTURED BY DOLBY LABORATORIES IS WARRANTED AGAINST DEFECTS IN MATERIALS AND WORKMANSHIP FOR A PERIOD OF ONE YEAR FROM THE DATE OF PURCHASE. THERE ARE NO OTHER EXPRESS OR IMPLIED WARRANTIES AND NO WARRANTY OF MERCHANTABILITY OR FITNESS FOR A PARTICULAR PURPOSE, OR OF NONINFRINGEMENT OF THIRD-PARTY RIGHTS (INCLUDING, BUT NOT LIMITED TO, COPYRIGHT AND PATENT RIGHTS).

LIMITATION OF LIABILITY:

IT IS UNDERSTOOD AND AGREED THAT DOLBY LABORATORIES' LIABILITY, WHETHER IN CONTRACT, IN TORT, UNDER ANY WARRANTY, IN NEGLIGENCE, OR OTHERWISE, SHALL NOT EXCEED THE COST OF REPAIR OR REPLACEMENT OF THE DEFECTIVE COMPONENTS OR ACCUSED INFRINGING DEVICES, AND UNDER NO CIRCUMSTANCES SHALL DOLBY LABORATORIES BE LIABLE FOR INCIDENTAL, SPECIAL, DIRECT, INDIRECT, OR CONSEQUENTIAL DAMAGES (INCLUDING, BUT NOT LIMITED TO, DAMAGE TO SOFTWARE OR RECORDED AUDIO OR VISUAL MATERIAL), COST OF DEFENSE, OR LOSS OF USE, REVENUE, OR PROFIT, EVEN IF DOLBY LABORATORIES OR ITS AGENTS HAVE BEEN ADVISED, ORALLY OR IN WRITING, OF THE POSSIBILITY OF SUCH DAMAGES.

DP600 DVD Drive Replacement Instructions

This document explains how to replace the DP600 DVD drive. Before you begin, be sure you have the following:

- Phillips screwdriver
- 5/64-inch hex wrench
- Needle-nose pliers
- DVD replacement kit (DP600DVD-SPK) with DVD drive (Dolby Part Number 8705290)

Please read this entire document before you begin the procedure. This procedure will take approximately 30 minutes.

Replacing the DVD Drive

To replace the DVD drive:

1. Power down the unit as follows:
 - a. From the touch screen, press **System>Power>Shutdown** (you may need to enter an administrator password), then press **ok** at the prompt. The unit will begin the shutdown process.
 - b. Wait until **Dolby DP600 Program Optimizer** appears on the screen, as shown in [Figure 1](#), then disconnect the power cords from the back of the unit.

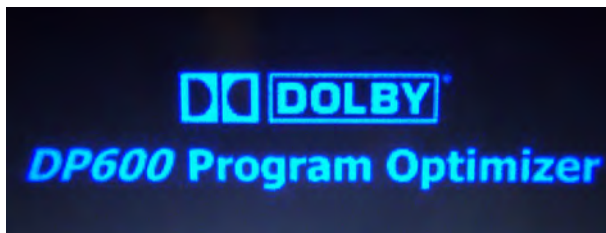


Figure 1 Disconnect Power Cords when You See This Screen

2. Remove the DP600 from its rack.

3. Remove the top four screws on the front of the lid, as shown in [Figure 2](#), then remove the top four screws on the rear of the lid, as shown in [Figure 3](#).

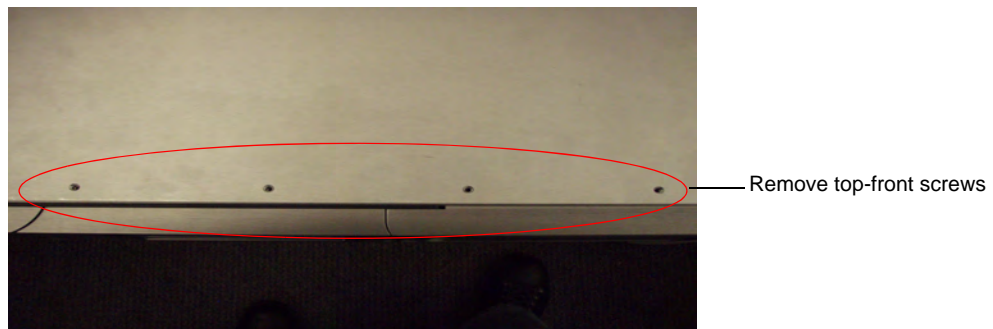


Figure 2 Remove Top-Front Screws

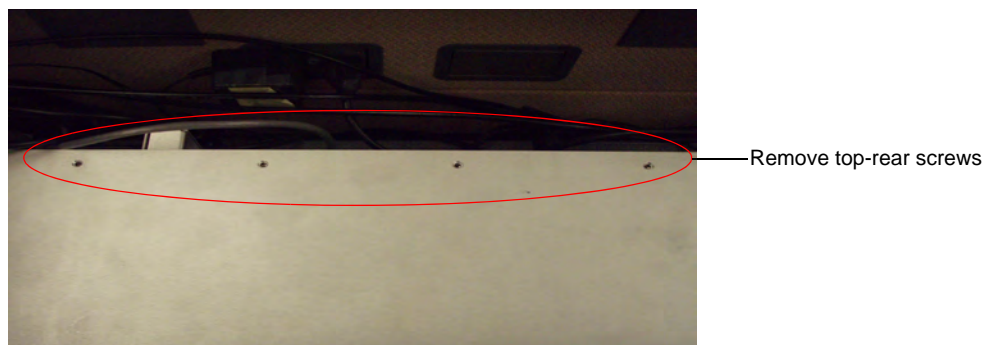


Figure 3 Remove Top-Rear Screws

4. Remove the far-left and far-right screws on each side of the lid (two each on the right and left sides). Then loosen (but don't remove) the remaining (middle three) screws on the left and right sides of the lid, as shown in [Figure 4](#) and [Figure 5](#).

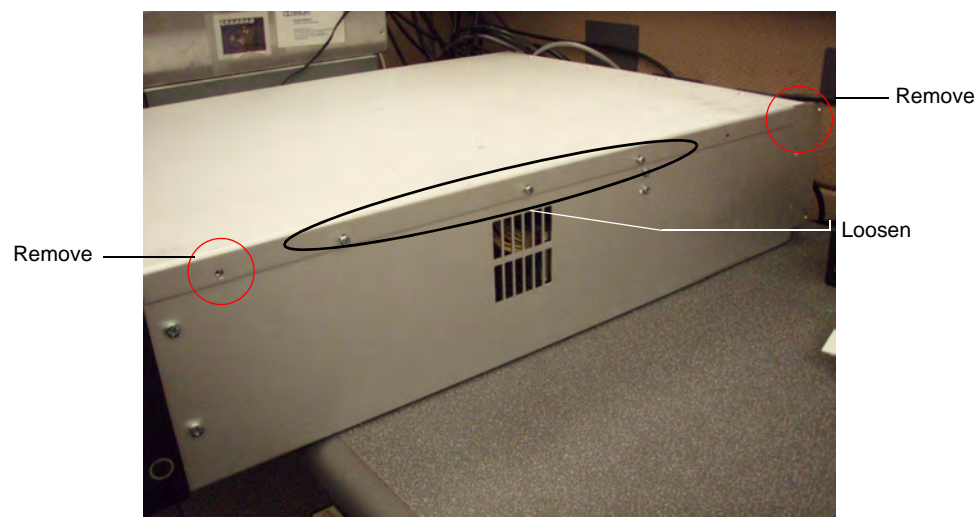


Figure 4 Right-Side Screws

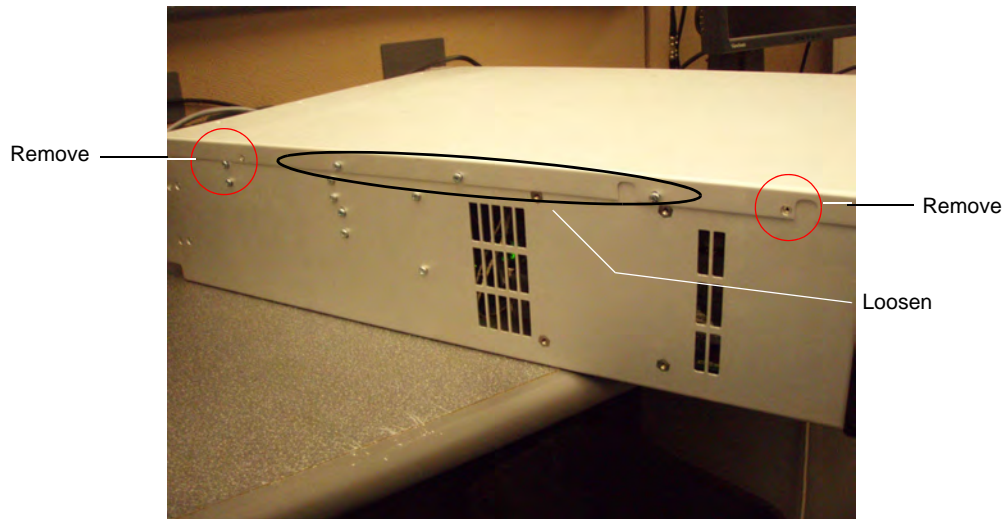


Figure 5 Left-Side Screws

5. Swing the touch-screen panel out to the left, as shown in [Figure 6](#).



Figure 6 Swing Out Touch-Screen Panel

6. Locate the small pry areas behind the right panel, as shown in [Figure 7](#).



Figure 7 Locate Pry Areas Behind Right Panel

7. Using your fingers or a cushioned screwdriver, gently pry off the right panel from its left side, as shown in [Figure 8](#) (the other side is a slotted lock).
Be careful not to drop the panel, as it is deceptively heavy and will come off suddenly once the locking mechanism disengages.



Figure 8 Pry Off Right Panel

8. Remove the lid from the unit, then locate the DVD drive housing assembly, as shown in [Figure 9](#).

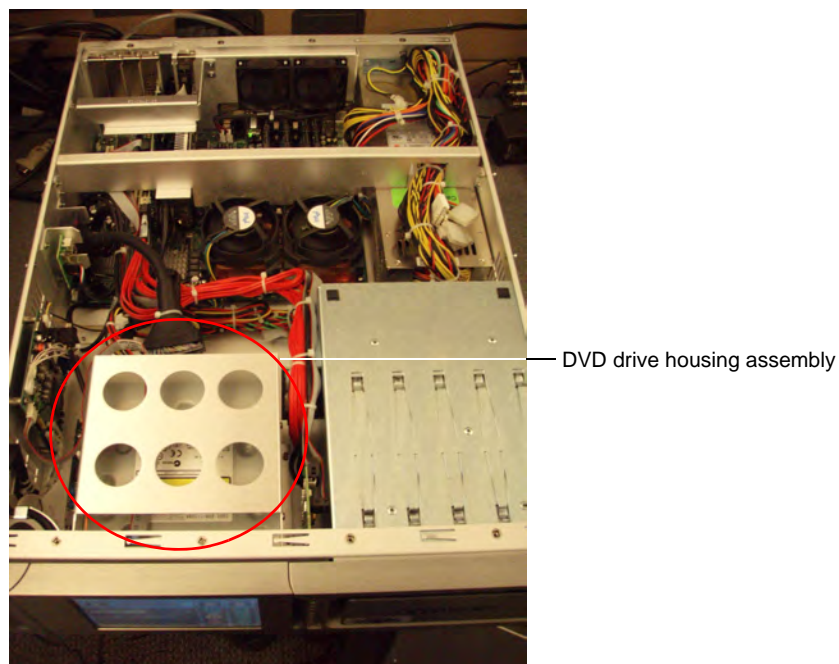


Figure 9 Locate DVD Drive Housing Assembly (Front View)

Figure 10 shows a rear view of the DVD drive housing assembly and the adjacent areas where you will need to disconnect cables (as detailed in the steps that follow).

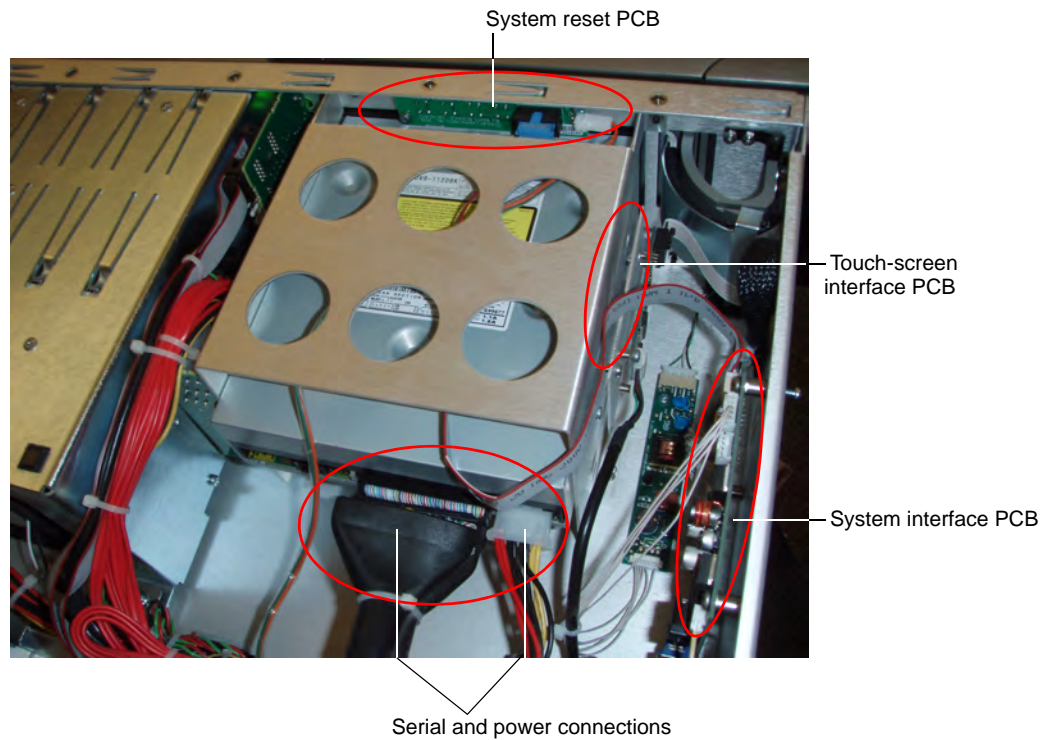


Figure 10 DVD Drive Housing Assembly and Adjacent Areas (Rear View)

9. Locate the two connections to the front-panel system reset printed circuit board (PCB) shown in Figure 11).

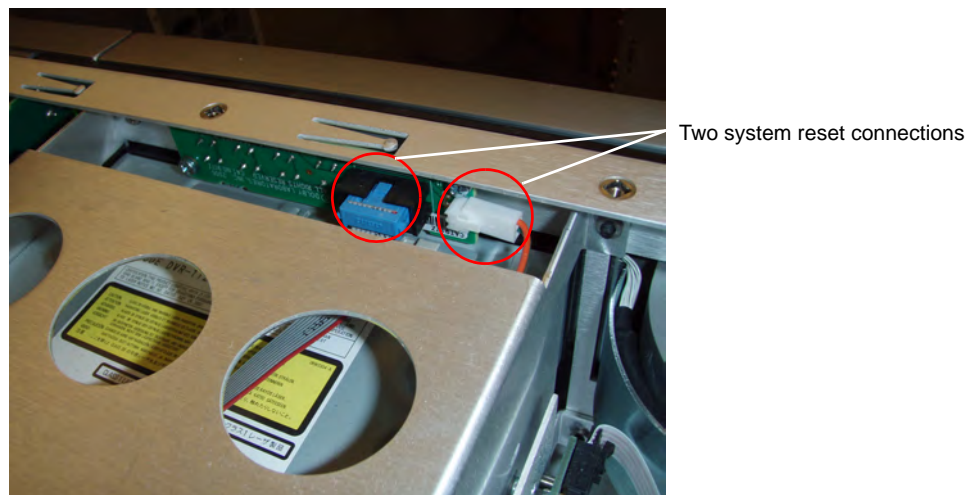


Figure 11 Connections to System Reset PCB

10. Follow the system reset LED power and serial connections back to their origins on the motherboard, and disconnect both cables, as shown in [Figure 12](#) and [Figure 13](#). You disconnect these cables so they do not obstruct the removal of the housing assembly.

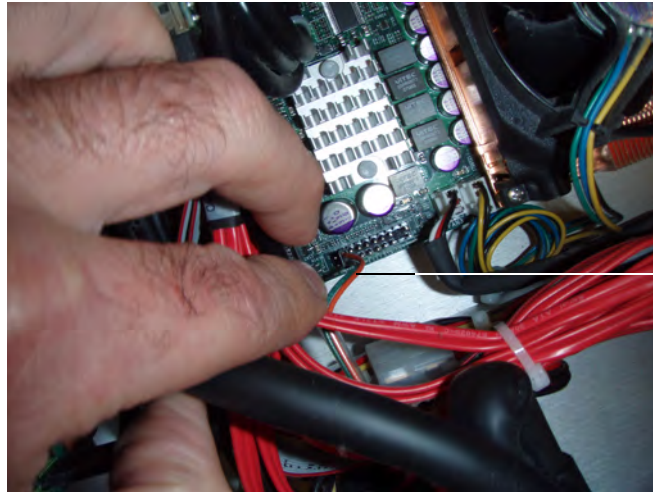


Figure 12 System Reset LED Power Connector



Figure 13 System Reset Serial Connector

11. Disconnect the serial and power connections to the DVD drive, shown in [Figure 14](#).

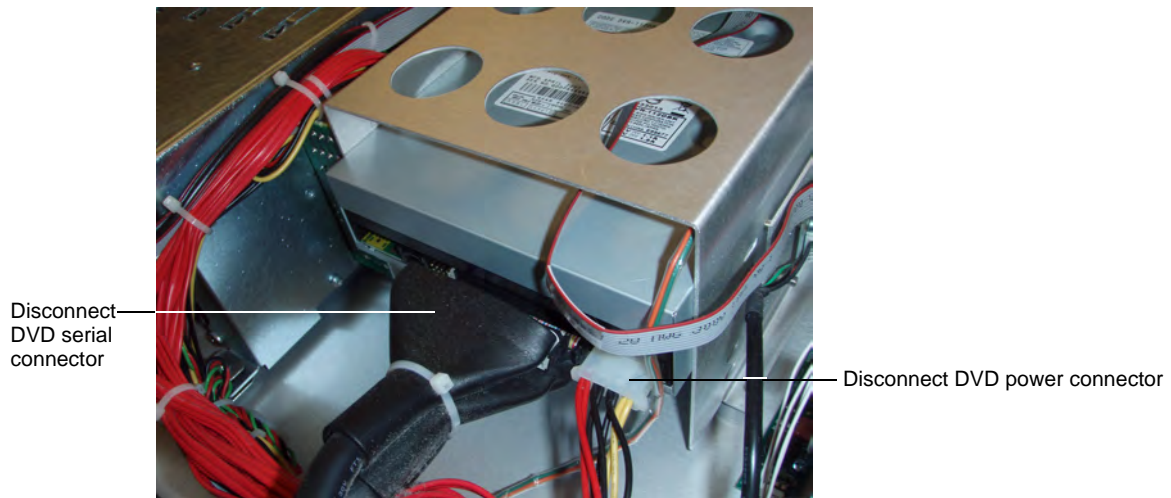


Figure 14 Disconnect Serial and Power Connections

12. Disconnect the two connections to the touch-screen interface PCB on the side of the unit.

You can disconnect the rear connection by hand, as shown in [Figure 15](#).



Figure 15 Disconnect Touch-Screen PCB Rear Connection

You can disconnect the front connection by pressing down on the latching mechanism using a pair of needle-nose pliers (see [Figure 16](#)).

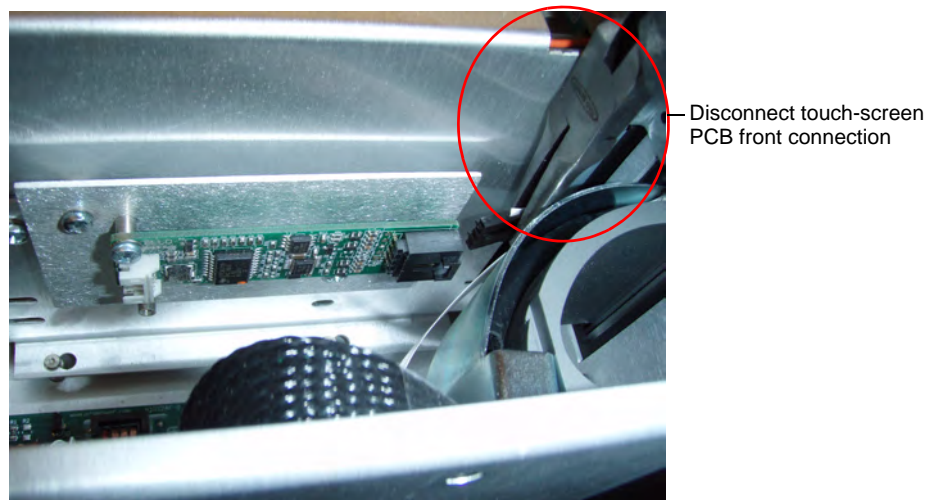


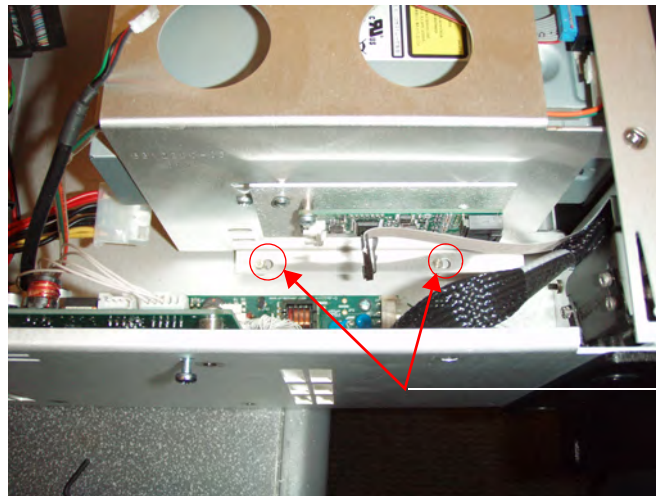
Figure 16 Disconnect Touch-Screen PCB Front Connection

13. Locate the screws on the front panel that secure the DVD housing assembly (see [Figure 17](#)), and use the 5/64-inch hex wrench to remove them.



Figure 17 Remove the Four Housing Assembly Screws

14. Gently slide the DVD housing toward the rear of the DP600 to free it from the locking mechanism, as shown in [Figure 18](#).



Two locking stand-offs on each side

Figure 18 Unlock DVD Housing Assembly

15. Gently lift the DVD housing assembly, and slide it to the rear of the DP600, taking care to free the housing from loose cables, as shown in [Figure 19](#).

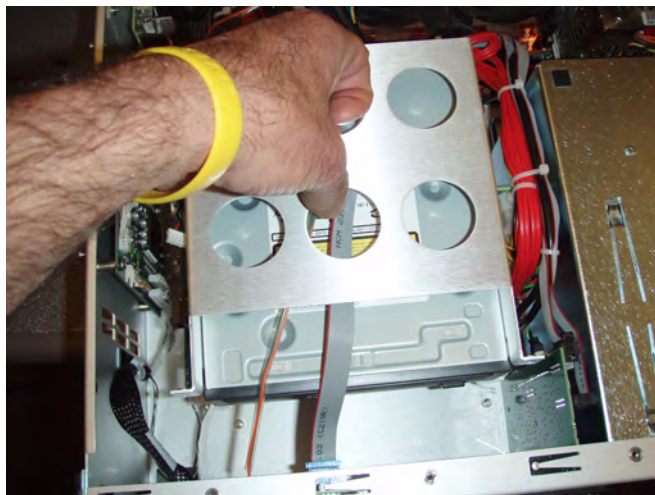


Figure 19 Lift DVD Housing Assembly

16. Remove the old DVD drive, and insert the replacement unit (see [Figure 20](#)).

Be sure to insert the DVD drive in its original mounting position before tightening the mounting screws. Make sure the mounting screws tighten down in their original locations, as indicated by marks left on the mounting bracket.



Figure 20 Replace Drive

17. Reverse steps 1-15 taking care to properly align and reconnect all the cables.
18. Return the unit to service.

Send Us Your Feedback

If you have a question or comment regarding this document, [send us an email](#).